



Artwork Guidelines

Please submit all artwork to art@amandahills.com

Please submit all artwork as an Adobe® Illustrator (AI), .EPS or .PDF vector file (CMYK) or as an Adobe® Photoshop (.PSD), .TIF or .JPG raster file (CMYK color) at 300 ppi or above.

The label sizes are 2.125" x 7" for 12 oz., 16 oz., 20 oz., and 24 oz. bottles and 1.875" x 7" for the 8 oz. bottle. Please keep all text within 1/8" of the label edge and add 1/8" around the label if a bleed is necessary.

Source and bottle size information needs to be included on the bottle. This information can be inserted anywhere on the label, vertically or horizontally, in any font/color and simply needs to be legible at printed size. The label should read:

CONTENTS + BOTTLE SIZE + SOURCE INFORMATION

**PREMIUM
SPRING
WATER**

8 FL. OZ. (237 ml)

— or —

12 FL. OZ. (354 ml)

— or —

16.9 FL. OZ. (.5 liter)

— or —

20 FL. OZ. (590 ml)

— or —

24 FL. OZ. (710 ml)

Source: Aristocrat Spring Water, Saegertown, PA 16433
Permit: PA #6206200
Distributed by: Amanda Hills Spring Water Company
1-800-375-0885 • www.amandahills.com

EXAMPLE:

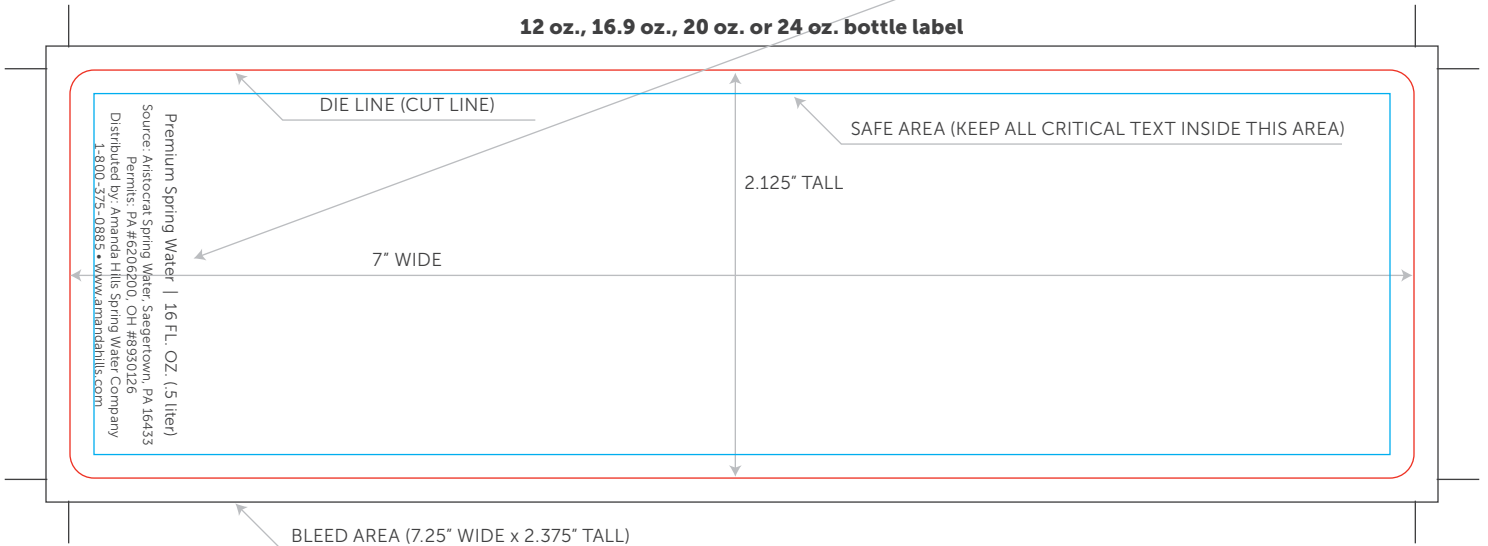
Premium Spring Water
16.9 FL. OZ. (.5 liter)

Source: Aristocrat Spring Water, Saegertown, PA 16433
Permits: PA #6206200, OH #8930126
Distributed by: Amanda Hills Spring Water Company
1-800-375-0885 • www.amandahills.com

Please add the state permit number if your ship-to state is listed ("PA #6206200" Is Required).

OH: "OH #8930126" WV: "WV #BW4292003" NY: "NYSHD Cert. #140"
CT: "Ct #271" MA: "MA #1126" MD: "MD #OW-132-md"
VT: "VT #20176" NH: "NH #269" ME: "ME #1-2131"

12 oz., 16.9 oz., 20 oz. or 24 oz. bottle label



8oz. bottle label

